

# Diamond<sup>®</sup>

EDGE™ SERIES

DOOR STYLES & FINISHES



A woman with long brown hair, wearing a grey cardigan over a white top and blue pants, stands in a bright kitchen. She is smiling and holding a small brown and white dog. In her other hand, she holds a blue, fluffy toy. The kitchen features white cabinetry with a classic design, a white countertop, and a wooden floor. Various kitchen items like jars, a bowl of onions, and a toaster are visible on the counter.

# Diamond<sup>®</sup>

EDGE<sup>™</sup> SERIES

Your personal style statement.<sup>™</sup>

Your kitchen should reflect your life, your style, and your discerning attention to detail. Bring your ideas to life with the beautiful palette of designer-inspired color and refined collection of doors from the Diamond<sup>®</sup> Edge<sup>™</sup> Series.

KARIS Maple Sterling White Paint



Brooks  
Full Overlay  
5-Piece Drawer Front  
ACMQRW



Brooks  
Full Overlay  
Slab Drawer Front  
ACMQRW



Brooks  
Inset\*  
Slab Drawer Front  
ACMQRW



Brooks  
Beaded Inset\*  
Slab Drawer Front  
ACMQRW



Gunther  
Full Overlay  
5-Piece Drawer Front  
ACMQRW



Gunther  
Full Overlay  
Slab Drawer Front  
ACMQRW



Gunther  
Inset\*  
Slab Drawer Front  
ACMQRW



Gunther  
Beaded Inset\*  
Slab Drawer Front  
ACMQRW



Langley  
Full Overlay  
5-Piece Drawer Front  
ACMQRW



Langley  
Full Overlay  
Slab Drawer Front  
ACMQRW



Langley  
Inset\*  
Slab Drawer Front  
ACMQRW



Langley  
Beaded Inset\*  
Slab Drawer Front  
ACMQRW



Daxton  
Full Overlay  
5-Piece Drawer Front  
ACMQRW



Daxton  
Full Overlay  
Slab Drawer Front  
ACMQRW



Daxton  
Inset\*  
Slab Drawer Front  
ACMQRW



Daxton  
Beaded Inset\*  
Slab Drawer Front  
ACMQRW



Karis  
Full Overlay  
5-Piece Drawer Front  
ACMQRW



Karis  
Full Overlay  
Slab Drawer Front  
ACMQRW



Karis  
Inset\*  
Slab Drawer Front  
ACMQRW



Karis  
Beaded Inset\*  
Slab Drawer Front  
ACMQRW



Tackett  
Full Overlay  
5-Piece Drawer Front  
ACMQRW



Tackett  
Full Overlay  
Slab Drawer Front  
ACMQRW



Tackett  
Inset\*  
Slab Drawer Front  
ACMQRW



Tackett  
Beaded Inset\*  
Slab Drawer Front  
ACMQRW



Vesta  
Full Overlay  
5-Piece Drawer Front  
**ACMQRW**



Vesta  
Full Overlay  
Slab Drawer Front  
**ACMQRW**



Vesta  
Inset\*  
Slab Drawer Front  
**ACMQRW**



Vesta  
Beaded Inset\*  
Slab Drawer Front  
**ACMQRW**



Shona  
Full Overlay  
5-Piece Flat Drawer Front  
**ACMQRW**



Shona  
Full Overlay  
5-Piece Drawer Front  
**ACMQRW**



Shona  
Full Overlay  
Slab Drawer Front  
**ACMQRW**



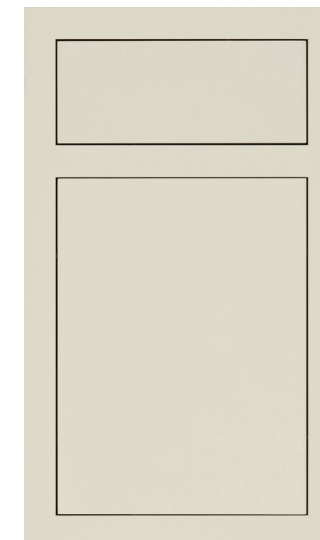
Shona  
Inset\*  
Slab Drawer Front  
**ACMQRW**



Shona  
Beaded Inset\*  
Slab Drawer Front  
**ACMQRW**



Trystan  
Full Overlay  
Slab Drawer Front  
**ACMQW D**



Trystan  
Inset  
Slab Drawer Front  
**D**



Trystan  
Beaded Inset  
Slab Drawer Front  
**D**



Wells  
Full Overlay  
5-Piece Drawer Front  
**ACMQRW**



Wells  
Full Overlay  
Slab Drawer Front  
**ACMQRW**



Davis  
Full Overlay  
5-Piece Drawer Front  
**ACMQRW**



Davis  
Full Overlay  
Slab Drawer Front  
**ACMQRW**



Caldera  
Full Overlay  
5-Piece Drawer Front  
**ACMQRW**



Caldera  
Full Overlay  
Slab Drawer Front  
**ACMQRW**



Sumner  
Full Overlay  
5-Piece Drawer Front  
**ACMQRW**



Sumner  
Full Overlay  
Slab Drawer Front  
**ACMQRW**



Montgomery  
Full Overlay  
5-Piece Drawer Front  
**ACMQRW**



Montgomery  
Full Overlay  
Slab Drawer Front  
**ACMQRW**



Montgomery  
Inset\*  
Slab Drawer Front  
**ACMQRW**



Montgomery  
Beaded Inset\*  
Slab Drawer Front  
**ACMQRW**

# PAINTS\*

Available on Maple, MDF and Quartersawn Oak.



Mindful Gray



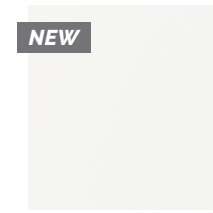
Limestone



Cloud



Juniper Berry



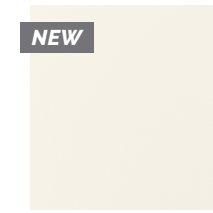
Brightest White



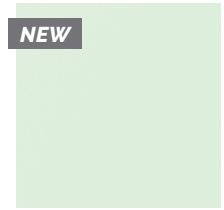
Sterling White



White



Westhighland White



Fleeting Green



Sea Salt



Coastal Plain



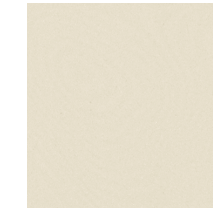
Retreat



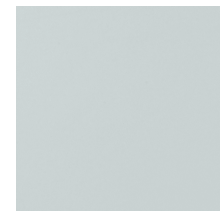
Icy Avalanche



Agreeable Gray



Coconut



North Star



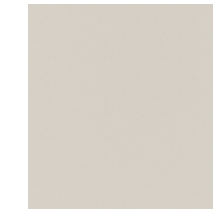
Interesting Aqua



Seaside



Abyss



Dover



Egret



Serious Gray



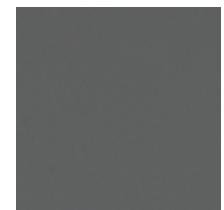
Distance



Maritime



Naval



Peppercorn



Moonstone



Foxhall Green



Forest Floor



Black

\*When Maple painted finishes (Paints, Sherwin-Williams or Brushed Technique) are specified, the center panels of the selected style may be constructed of Medium Density Fiberboard (MDF). MDF provides a smoother finish when painted, and is more resistant to warping, expansion, and contraction.



## SHERWIN-WILLIAMS®

With more than 2000 paint colors available from the Sherwin-Williams color palette to enhance your Maple, MDF or Quartersawn Oak door style, you'll be sure to find a color that is beyond ordinary. Layer a Penned Glaze or Brushed Finish for a true artistic interpretation. Please see your designer for details and exclusions.

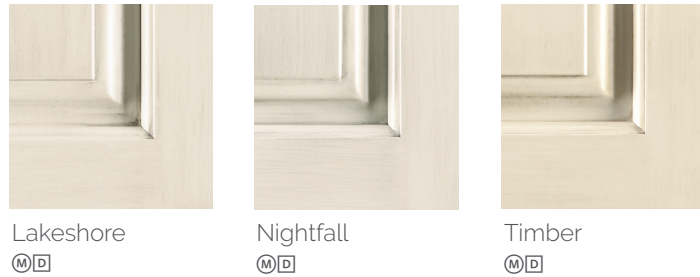
## PENNEDED GLAZES FOR PAINTS\*

Shown on Maple Coconut. Available on species as indicated.  
In the panned glaze process, the glaze material is hand-applied to only the highlighted areas.



## BRUSHED FINISHES FOR PAINTS\*

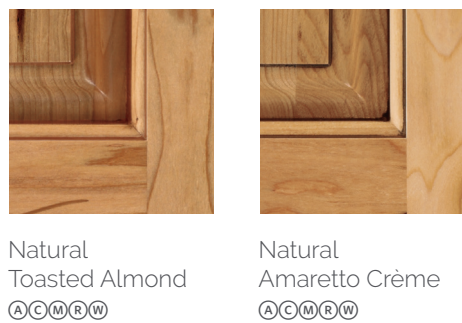
Shown on Maple Coconut, available on most paints. See your designer for details.



\*When Maple painted finishes (Paints, Sherwin-Williams or Brushed Technique) are specified, the center panels of the selected style may be constructed of Medium Density Fiberboard (MDF). MDF provides a smoother finish when painted, and is more resistant to warping, expansion, and contraction.

## STAINS WITH PENNEDED GLAZES

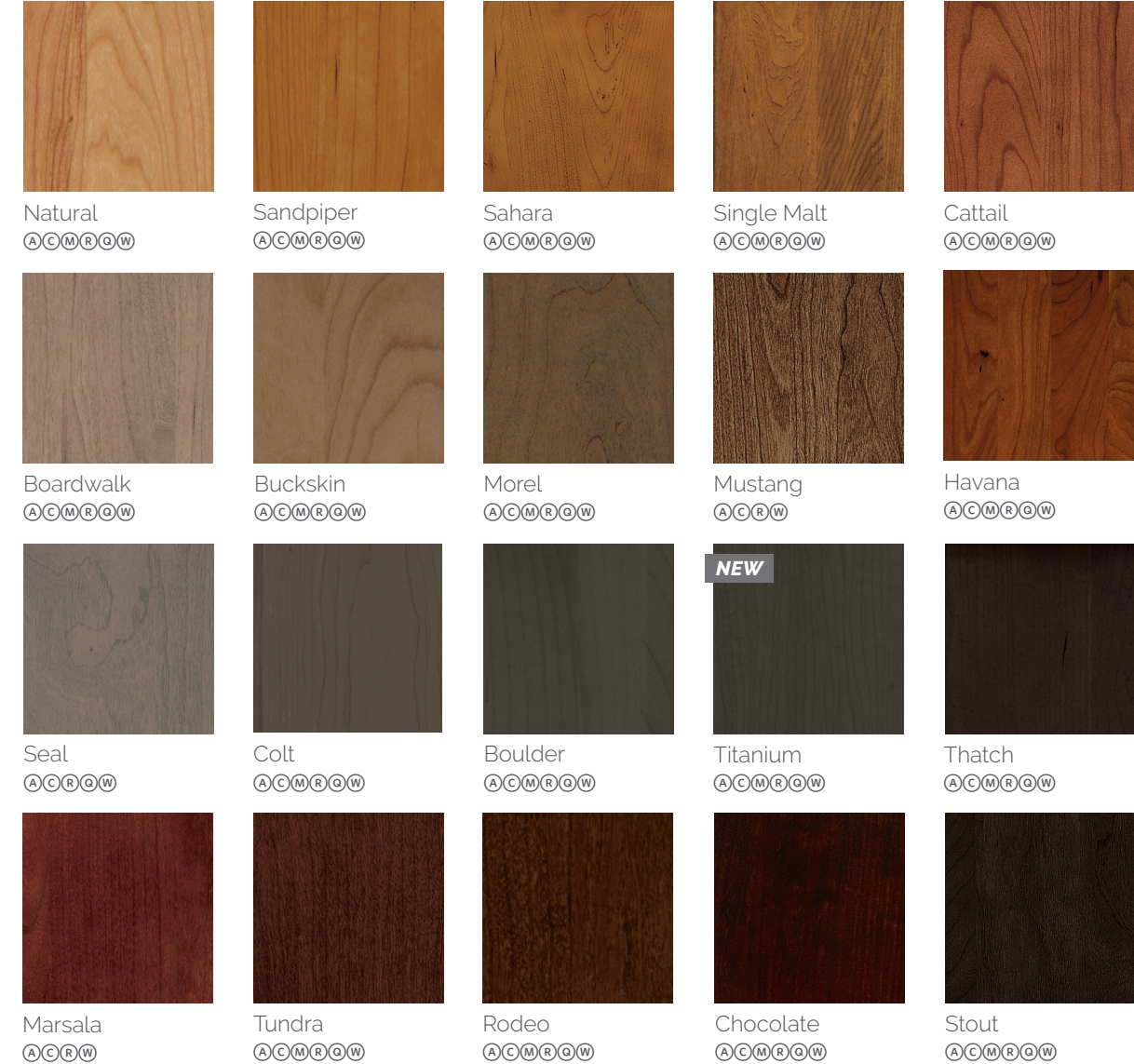
Shown on Maple. Available on species as indicated.  
In the panned glaze process, the glaze material is hand-applied to only the highlighted areas.



## STAINS

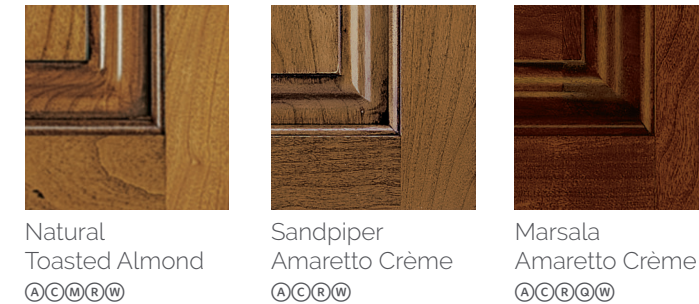
Shown on Maple Coconut. Available on species as indicated.

(A) ALDER (M) MAPLE (Q) QUARTERSAWN OAK (D) MDF  
(C) CHERRY (R) RUSTIC ALDER (W) WALNUT



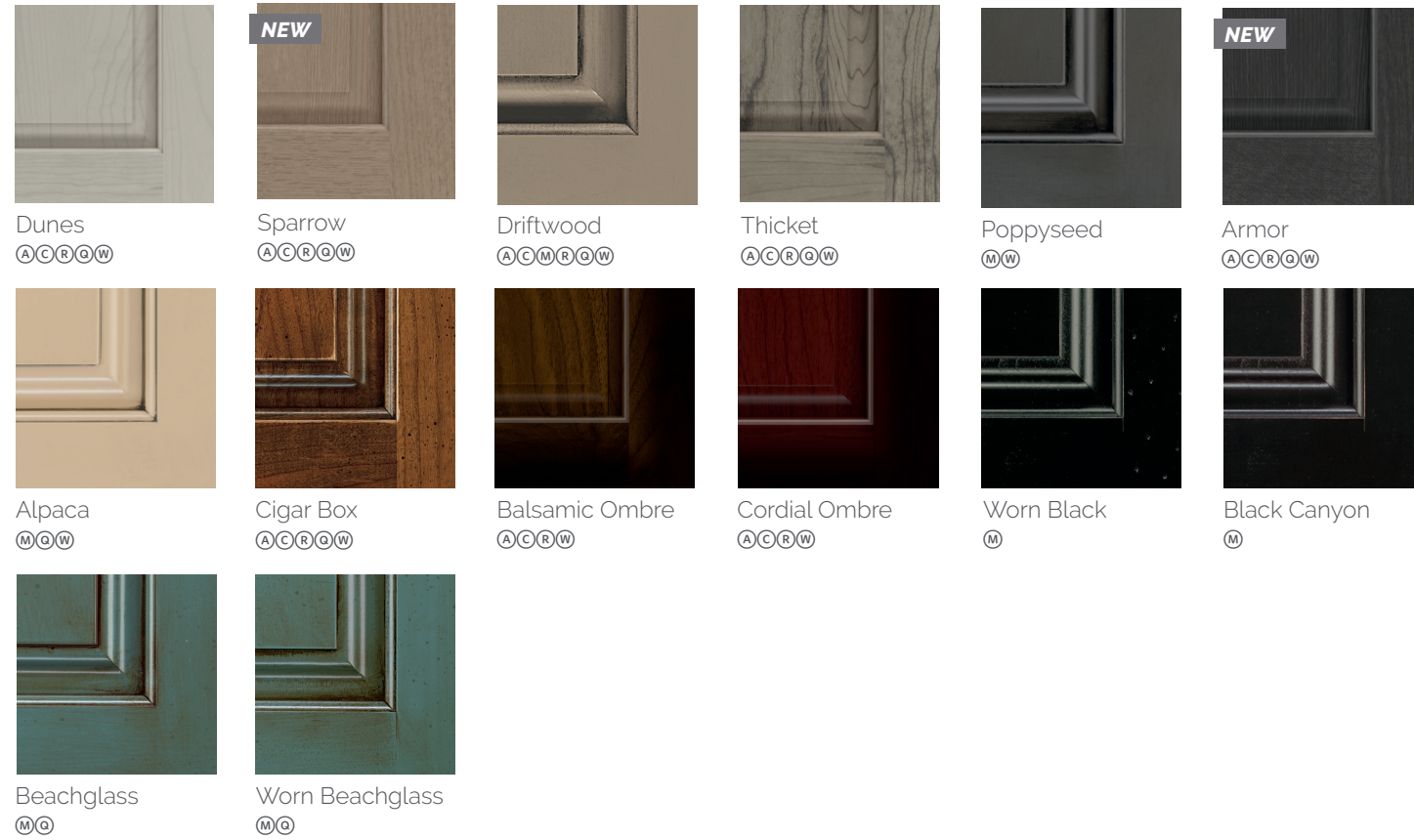
## STAINS WITH FLOODED GLAZES

Available on species as indicated. In the flooded glaze process, the glaze material is sprayed onto the entire cabinet door and is then wiped off everywhere except in the highlight areas.

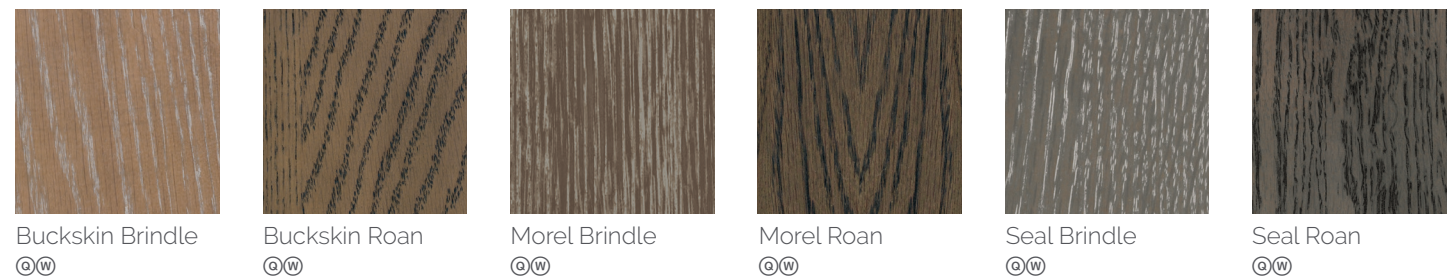


## SPECIALTY FINISHES

Shown on Maple. Available on species as indicated.



## STAINS WITH CERUSED FINISHES



(A) ALDER (M) MAPLE (Q) QUARTERSAWN OAK (D) MDF  
 (C) CHERRY (R) RUSTIC ALDER (W) WALNUT

## OUTSIDE EDGE DOOR PROFILE OPTIONS

Every Edge™ Series door style offers several outside edge profiles to tailor your look. It's amazing how seemingly small changes make such a drastic difference in the appearance of a door. From simple and straight to traditionally detailed, check which options are available on the styles you love and select the shape that suits your vision.



## SHEEN OPTIONS

A choice in sheen can significantly alter the appearance of a door, especially those finished with medium to dark paints and stains where matte finishes are more noticeable. We have paired a Standard Sheen (top) with our new Matte Sheen (bottom) on this Brooks Cherry Mustang door to illustrate the difference. Matte Sheen is available on all paints and stains.

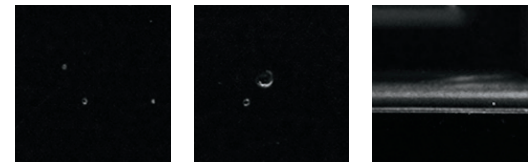


Standard Sheen v. Matte Sheen

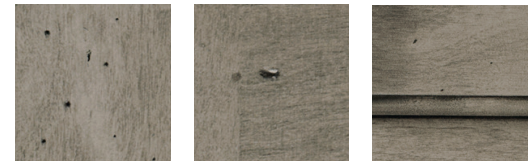
# AGING TECHNIQUES

## TIMEWORN

This light distressing technique features random wormholes, tiny dents and light signs of wear to mimic the appearance of imperfections similar to those found on antiques.



Wormholes Dents Wear  
Shown on painted finish



Wormholes Dents Wear  
Shown on stained finish



## HEWVN

This subtle technique mimics finish wear that naturally develops over time, and features a continuous but light sand-through along the sharp profiles to highlight the distinctive details of each door and drawer front. Sand-through may vary in thickness around the perimeter of a single door and throughout the kitchen.



Light Sand-through  
Shown on painted finish

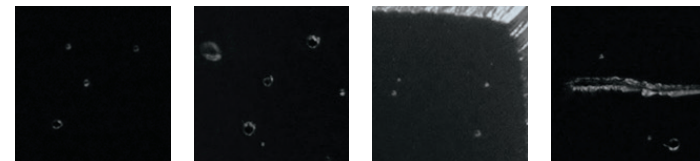


Light Sand-through  
Shown on stained finish

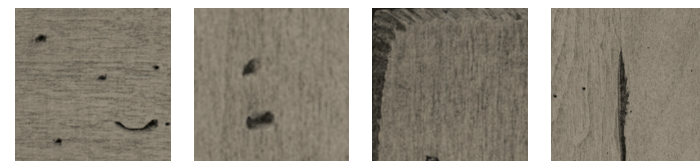


## EXTRA TIMEWORN

This more aggressive technique includes random rasped corners and edges, wormholes, mars, splits, gouges, small dings and dents for an authentically worn look.



Wormholes Dents Rasping Mars & Splits  
Shown on painted finish



Wormholes Dents Rasping Mars & Splits  
Shown on stained finish



## EXTRA HEWVN

This more aggressive technique features burnished sand-through on corners and raised profiles along with sanding on sharp profiles to expose underlying wood for all species and colors in the Edge line. Unlike Hewn, Extra Hewn is a RANDOM sand-through technique varying the number of corners and raised profiles receiving burnished sand-through and the sanding of sharp profiles. As with normal aging, the worn edges will vary within individual doors and throughout the entire room.



Aggressive Sand-through  
Shown on painted finish



Aggressive Sand-through  
Shown on stained finish





